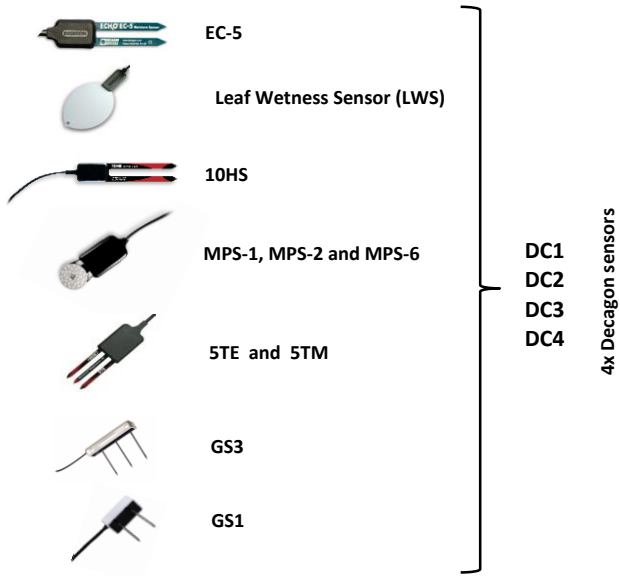


* Connection schema of SD Radio Node 3.0 (29-0313)

(Firmware version: RadioNode_SD30_v100.c)
(version 1.00, 24.08.2015)



User's communication terminal

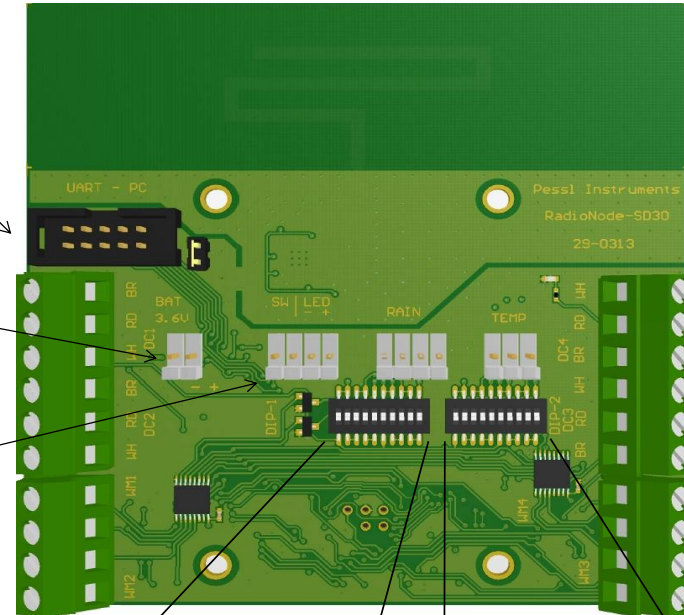


Baudrate: 38400
Data: 8 bit
Parity: None
Stop bit: 1 bit

3.6V Battery



External pushbutton with LED



DIP Switch 1

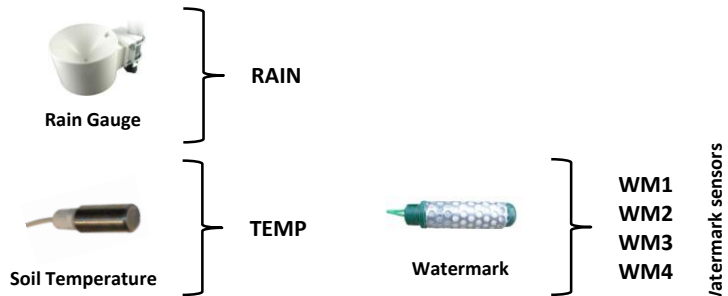
1 2 3 4 5 6 7 8 9 10
A B C A B C A B C --

Decagon Sensor 1 (DC1)
Decagon Sensor 2 (DC2)
Decagon Sensor 3 (DC3)
Reserved

DIP Switch 2

1 2 3 4 5 6 7 8 9 10
A B C D E F -- -- --

Decagon Sensor 4 (DC4)
Soil Media
Reserved



D	E	F	Soil media	EC-5	10HS	LWS	MPS-1	MPS-2	MPS-6	5TE	5TM	GS3	GS1
0	0	0	Mineral soil	X	X					X	X	X	X
0	0	1	Potting soil	X	N/A					X	X	X	X
0	1	0	Rockwool	X	N/A	Not used!	Not used!	Not used!	Not used!	X	X	N/A	N/A
0	1	1	Perlite	X	N/A	Not used!	Not used!	Not used!	Not used!	X	X	X	X
1	0	0	Peat	N/A	N/A					N/A	N/A	X	X
others			"reserved"	N/A	N/A					N/A	N/A	N/A	N/A

A	B	C	Decagon sensor
0	0	0	EC-5
0	0	1	10HS
0	1	0	LWS
0	1	1	MPS-1
1	0	0	MPS-2 / MPS-6 / 5TE / 5TM / GS3
1	0	1	GS1
1	1	0	"reserved"
1	1	1	"reserved"

* X - Available calibration.

* N/A - Not available! (For EC-5, 10HS, 5TE, 5TM, GS3, GS1 - Default mineral soil calibration)